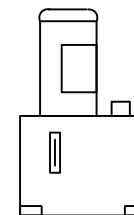
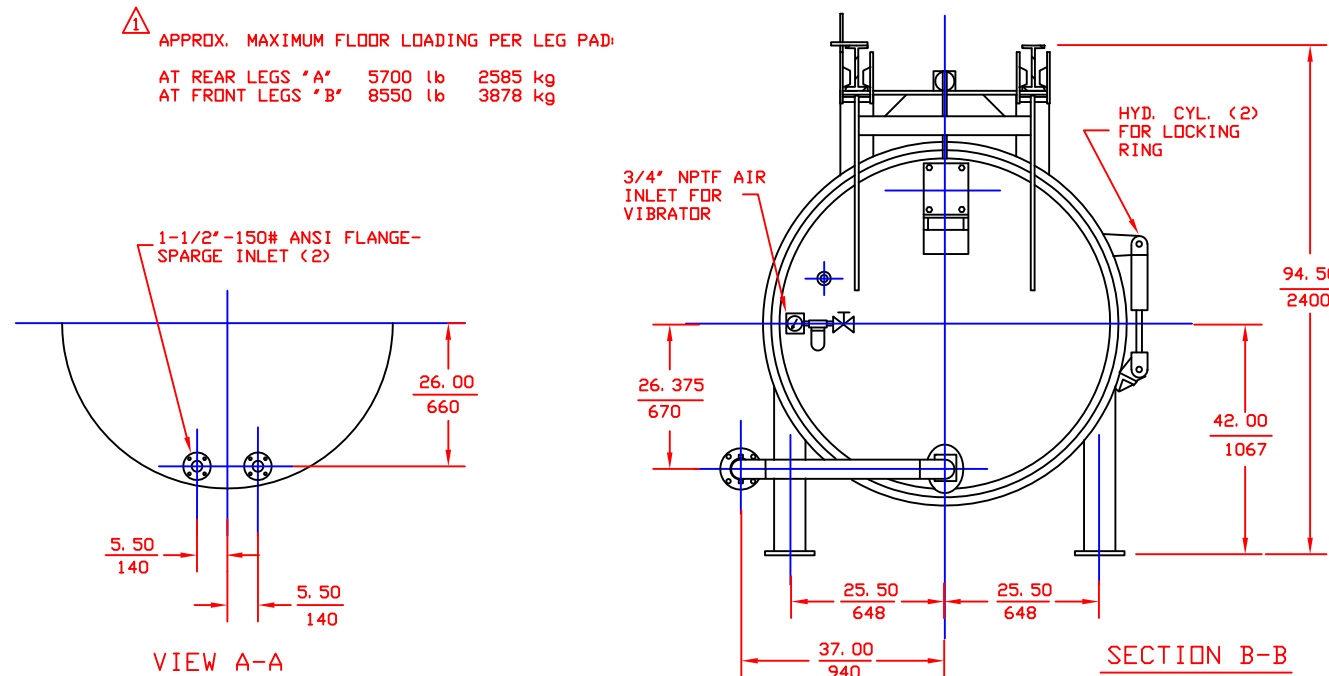


⚠ APPROX. MAXIMUM FLOOR LOADING PER LEG PAD:

AT REAR LEGS "A" 5700 lb 2585 kg
AT FRONT LEGS "B" 8550 lb 3878 kg



5 HP HYDRAULIC POWER PACK FOR LOCKING RING & COVER EXTRACTOR. ELECTRICAL CHARACTERISTICS AS REQUIRED

VESSEL DESIGNED, BUILT, INSPECTED, & STAMPED IN ACCORDANCE WITH ASME CODE, SECTION VIII, DIV. 1, PARA UW12C WITH LATEST EDITION & ADDENDA

GENERAL SPECIFICATIONS U. S. CUSTOMARY S. I. METRIC

FILTRATION AREA PER UNIT (WIRE CLOTH)	516 SQ FT	47.9 SQ M
DISHED HEAD THICKNESS	5/16"	7.9 mm
DISHED HEAD RADIUS	54"	1372 mm
SHELL THICKNESS	5/16"	7.9 mm
SHELL OUTSIDE DIAMETER	60"	1524 mm
EMPTY WEIGHT PER UNIT (APPROX.)	6800 lb	3084 kg
SHIPPING WEIGHT PER UNIT (APPROX.)	7200 lb	3266 kg
TANK VOLUME PER UNIT (APPROX.)	1740 gal	6587 l
DESIGN TEMPERATURE	42° F TO 350° F	6° C TO 177° C
DESIGN PRESSURE- INTERNAL	70 PSIG	483 kPa
DESIGN PRESSURE- EXTERNAL	15 PSIG	103 kPa

AIR REQ'D FOR VIBRATOR: 60 SCFM @ 80 PSIG
28.3 L/SEC @ 552 kPa

DIMENSIONS = $\frac{\text{INCHES}}{\text{MILLIMETERS}}$

WARNING!

ALL PRESSURE VESSELS SHOULD BE EQUIPPED WITH A PRESSURE GAUGE AND A PRESSURE RELIEF DEVICE PRIOR TO PLACING VESSEL INTO SERVICE

PARTS LIST DRWG: PLD-122976
PARTS REF. LIST: PR-013375

F122976 PROPRIETARY
PROPERTY OF INDUSTRIAL FILTER & PUMP MFG. CO. ALL RIGHTS RESERVED.

		© 1994 FILTER UNIT, DUAL	
		TYPE 122.902 SERIES 60-6-20	
		MODEL "D"	
		70 PSIG INT.	
		15 PSIG EXT. ASME CODE	
		INDUSTRIAL FILTER & PUMP MFG. CO.	
		5900 OGDEN AVENUE	
		CICERO, ILLINOIS 60804	
7/15/94	1	ADDED LOADING	SCALE
DATE	NO.	REVISIONS	CK.
			3/4"=1"
			7/15/94
			JCP
			FD-122976-1